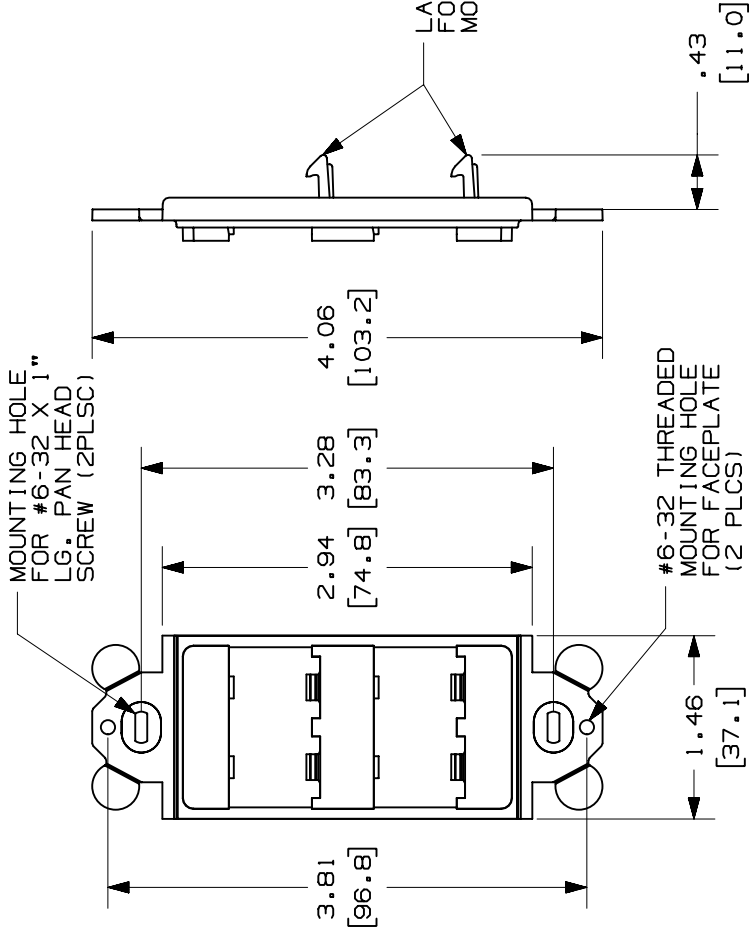


THIS COPY IS PROVIDED ON A RESTRICTED BASIS AND IS NOT TO BE USED IN ANY WAY DETRIMENTAL TO THE INTERESTS OF PANDUIT CORP.

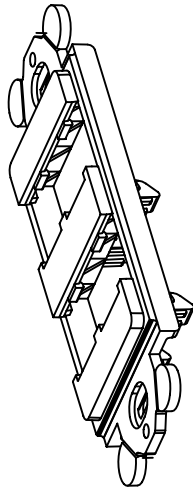


PANDUIT P/N	WEIGHT
CFG4**	.19 LB/10 PCS (89.6 g/10 PCS)



**NOTES:**

- SEE CURRENT CATALOG FOR ADDITIONAL PART NUMBER SUFFIXES TO INDICATE COLOR AND OR PACKAGE QUANTITY.
- SEE CATALOG FOR COMPLETE LIST OF PARTS APPLICABLE FOR USE WITH THIS PART.
- DIMENSIONS IN PARENTHESES ARE IN METRIC.
- (2) #6-32 X 1" PANHEAD SCREWS ARE SUPPLIED.



CAD FILENAME/LAYERS

M00021BA\_DC\_00D.PRT

# PANDUIT

CORP. TINLEY PARK, ILLINOIS

"GFCI" MODULE FRAME  
FOUR POSITION (CFG4\*\*)  
CUSTOMER DRAWING

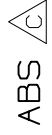
UNLESS OTHERWISE SPECIFIED,  
DIMENSIONAL TOLERANCES ARE:  
(.X) ± (.XXX) ±.010 (.3)  
(.XX) ±.03 (.8) ANGLES ±

UNLESS OTHERWISE SPECIFIED,  
ALL DIMENSIONS ARE GIVEN  
IN INCHES, THIRD ANGLE PROJECTION.

DRAWN BY	RCA	MAT'L:	NONE
DATE	7-28-97	DRAWING NO.	00021-03
CHECKED BY	CEF	SCALE	

ECN	CHK	CUST	SUP
00021-03	CEF		
00021-03	CEF		
00021-03	CEF		

REV	DATE	BY	CHK	DESCRIPTION
3	11-4-98	JSP		D. PART DID WEIGH .93.0 g/10 PCS. C. MATERIAL WAS ABS/PC, NOW IS JUST ABS.
2	9-12-97	RCA	CEF	B. REV'D TITLE WAS MINI-COM DECORA FRAME FOUR POSITION.
1	8-26-97	JBA	CEF	A. REV'D # OF PIECES: WAS 100.
R	7-28-97	RCA	CEF	RELEASED TO PRODUCTION.



ABS

DWG  
00021-03  
A  
SIZE